

Copyright © 2025 Global Power Products, Inc. All Rights Reserved ®.

Meter-Mounted Transfer Switch



TABLE OF CONTENTS

01

OVERVIEW

Allows homeowners to safely connect portable generator power to their home during an outage.

03

INSTALLATION

Installed by a certified electrician in less than 15 minutes.

02

SAFETY

Safe for homeowners and protects essential utility line workers.

04

OPERATION

Easily control which power source is connected to the home.





GLOBAL

POWER PRODUCTS

COMPANY HISTORY

Founded in 1995, Global Power Products has been manufacturing transfer switches, smart electric meters, and surge suppression devices for over 25 years. With over 150,000 units sold, the GenerLink Transfer Switch is our most popular product to date. All products are proudly manufactured in the United States.



UTILITY APPROVAL



Approved in over
9 million homes
across
11 provinces and territories
and 18 utility companies.



Approved in over
22 million homes
across
49 states and 700 utility
companies.



01

GENERLINK OVERVIEW

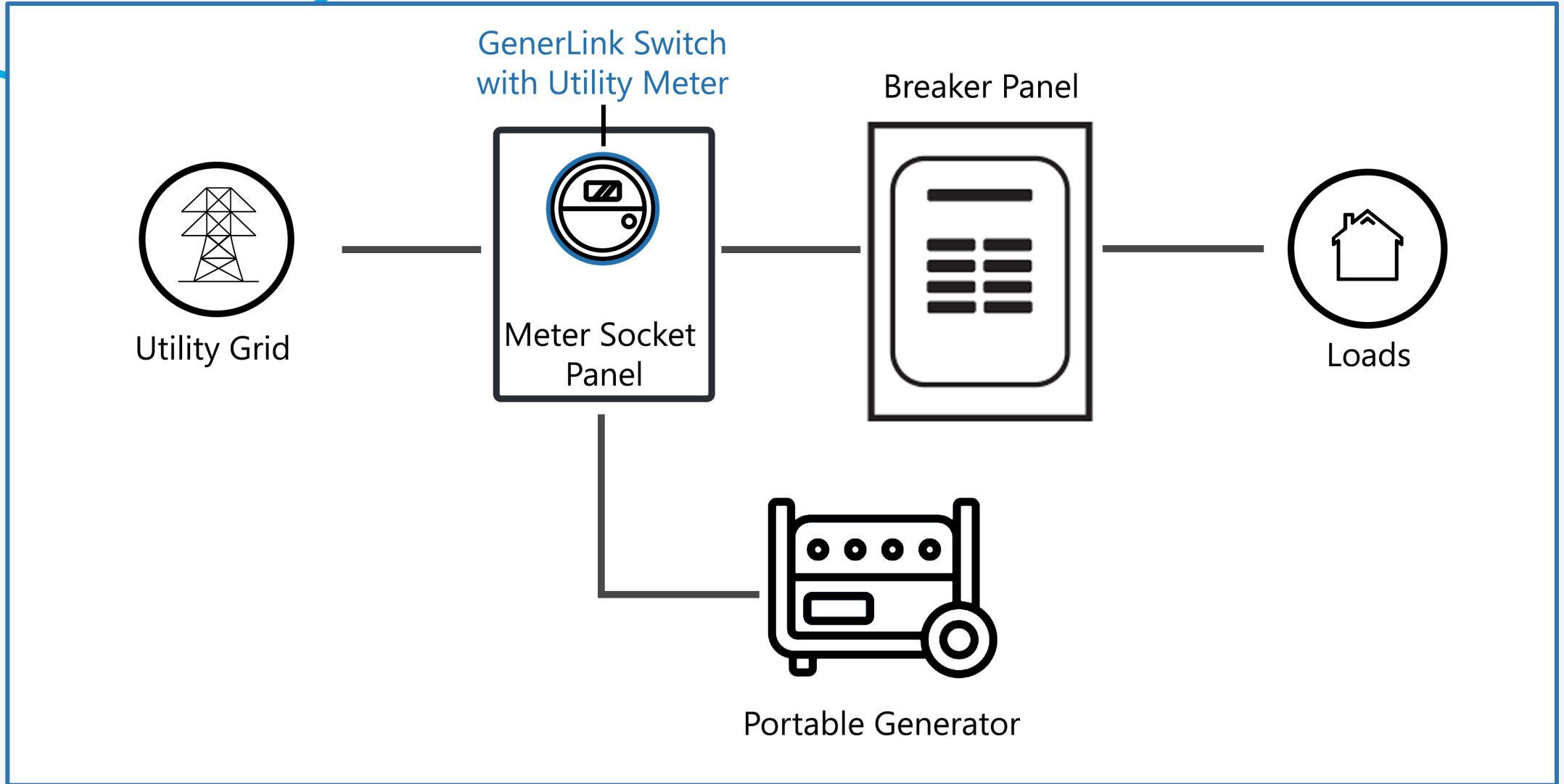
TRANSFER SWITCH

The GenerLink allows homeowners to safely connect portable generator power directly to the main breaker of their home in minutes!



01

GENERLINK OVERVIEW

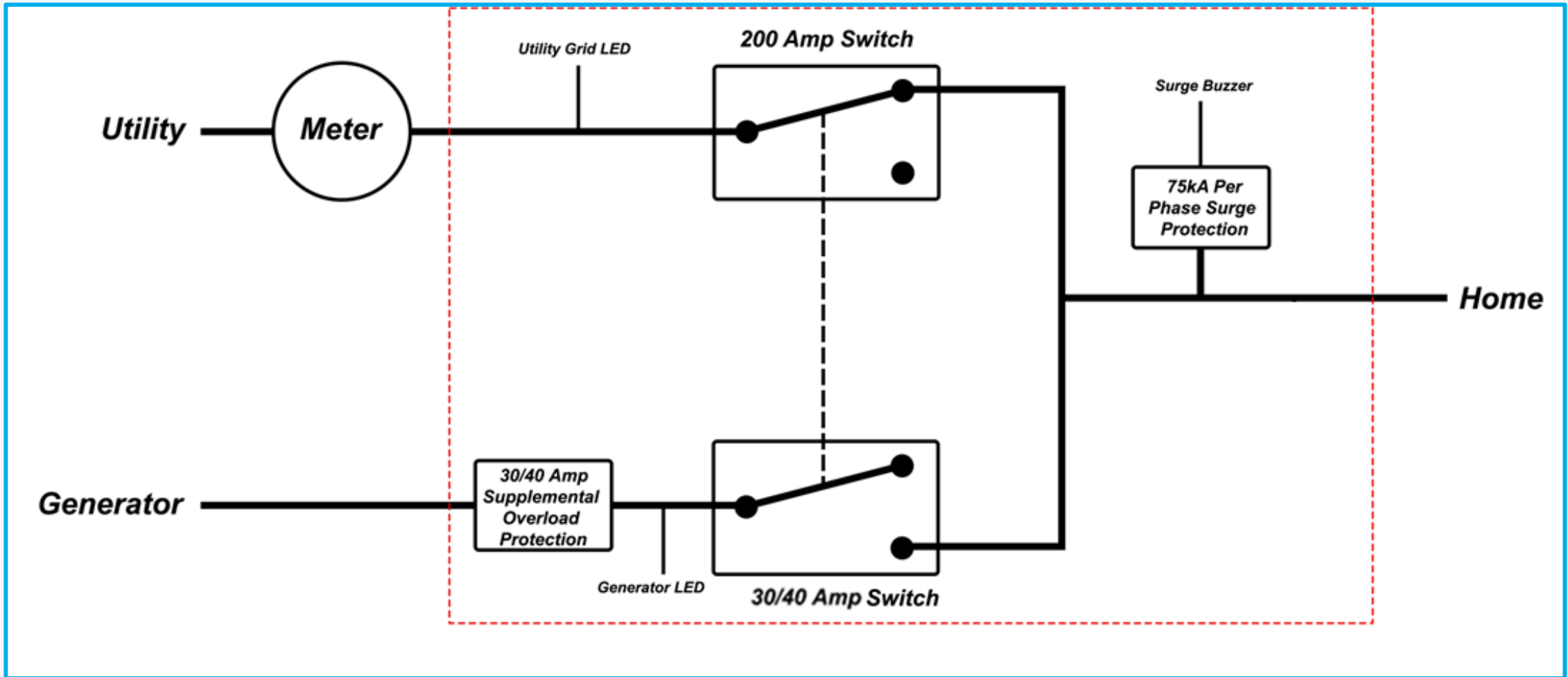


SURGE SUPPRESSION

The GenerLink can be equipped with whole-home surge protection to safeguard sensitive equipment within the home from damage caused by transient voltage surges.

01**GENERLINK OVERVIEW****TECHNICAL SPECIFICATIONS**

Weight:	4 lbs.
Socket Style:	Ring or Ring-less, 200 Amp, 4-jaw
Compliance:	UL 1008M
Surge Protection:	75 kA per phase
Utility Input Voltage:	200 to 250 V AC
Utility Compatibility:	200 Ampere or less
Generator Input Voltage:	200 to 250 V AC
Generator Compatibility:	30-40 Ampere or less, 7-10kW Continuous
Generator Protection:	Supplemental 30-40A Overcurrent Protection
Generator Connection:	Proprietary GenerLok™ Cord
Life Cycle:	300,000 Operations
Temperature Range:	-30°C to 60°C External Ambient



02

GENERLINK SAFETY

UTILITY SAFETY

The GenerLink ensures the home is connected to only one power source at a time, preventing the portable generator from back-feeding into utility lines and safeguarding utility line workers.



**UL 1008M****File: E216456****Date: 07/2024****UL-Listed
Device**

The listing from Underwriter Laboratories indicates that the GenerLink has undergone and passed rigorous safety and reliability tests.

**UL-Listed
Components**

All components used inside the GenerLink are individually UL-Listed to ensure reliability at every level.

2020 NATIONAL ELECTRIC CODE

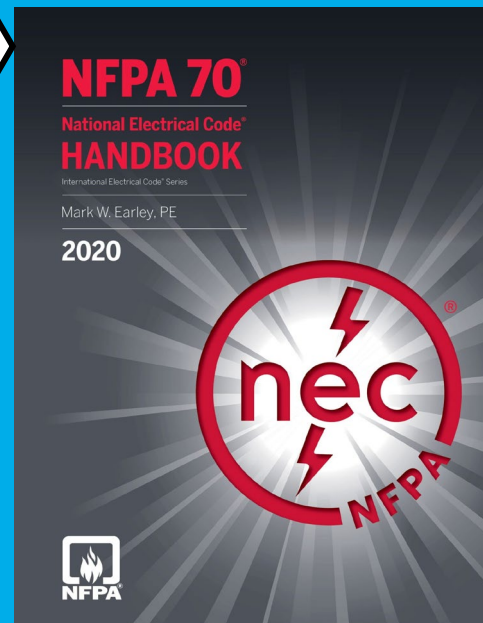
(B) Meter-Mounted Transfer Switches. Transfer switches installed between the utility meter and the meter enclosure shall be listed meter-mounted transfer switches and shall be approved. Meter-mounted transfer switches shall be of the manual type unless rated as determined by 702.4(B)(2).

Informational Note: For more information, see UL 1008M, *Transfer Switch Equipment, Meter Mounted*.

Because most meters and their associated enclosures are under the control of the serving electric utility, their approval is necessary in order to install a meter-mounted transfer switch. In addition to this requirement in Article 702, the permission to install a meter-mounted transfer switch, such as the type shown in Exhibit 702.2, ahead of service equipment is specified in 230.82(11). The meter-mounted transfer switch is required to be marked indicating that it



EXHIBIT 702.2 A meter-mounted transfer switch suitable for use in optional standby systems. (Courtesy of Global Power Products, Inc.)



Section 706.2(B) of the 2020 NEC states, “Transfer switches installed between the utility meter and the meter enclosure shall be listed meter-mounted transfer switches and shall be approved.” This section shows an example of such approved equipment with an image of our GenerLink Transfer Switch.

03

GENERLINK INSTALLATION

The GenerLink can be installed in any **200-ampere ring or ring-less type 2S meter socket** by a certified electrician.

Most installations take less than 15 minutes!



A representative from the utility company must be on-site to cut the meter seal.

5-Step Installation in Under 15 minutes!

Remove cabinet cover or locking ring and remove the electric meter.

STEP
1

Install the GenerLink into the meter socket.

STEP
3

Install the electric meter to the top of GenerLink and add a locking ring to secure the meter in place.

STEP
5

STEP
2

Connect the neutral lead from the GenerLink to the neutral lug in the meter cabinet.

STEP
4

Place the meter can cover or locking ring to hold the device in place.



04

GENERLINK OPERATION

4-Step Process to Connect Generator Power

STEP 1

Turn off all breakers in the breaker panel including the main breaker.

STEP 3

Power on the portable generator.

STEP 2

Connect the GenerLok cord to the generator and the inlet on the GenerLink.

STEP 4

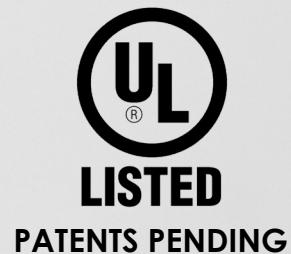
Turn on the main breaker then any essential loads in the breaker panel.



Status Lights

- The **Green Light** indicates utility power is available for use.
- The **Red Light** indicates there is a fault inside the unit, and it needs to be serviced.
- The **Yellow Light** turns on when the home is using utility power and is exceeding 30/40 amps, helping homeowners understand their power limits during an outage.
- The **Blue Light** indicates alternate source power is being delivered to the home.





Copyright © 2025 Global Power Products, Inc. All Rights Reserved ®.

Meter-Mounted Transfer Switch

WANT MORE INFO?

Email: info@globalpowerproducts.com

Phone: (800)886-3837

URL: www.generlink.com